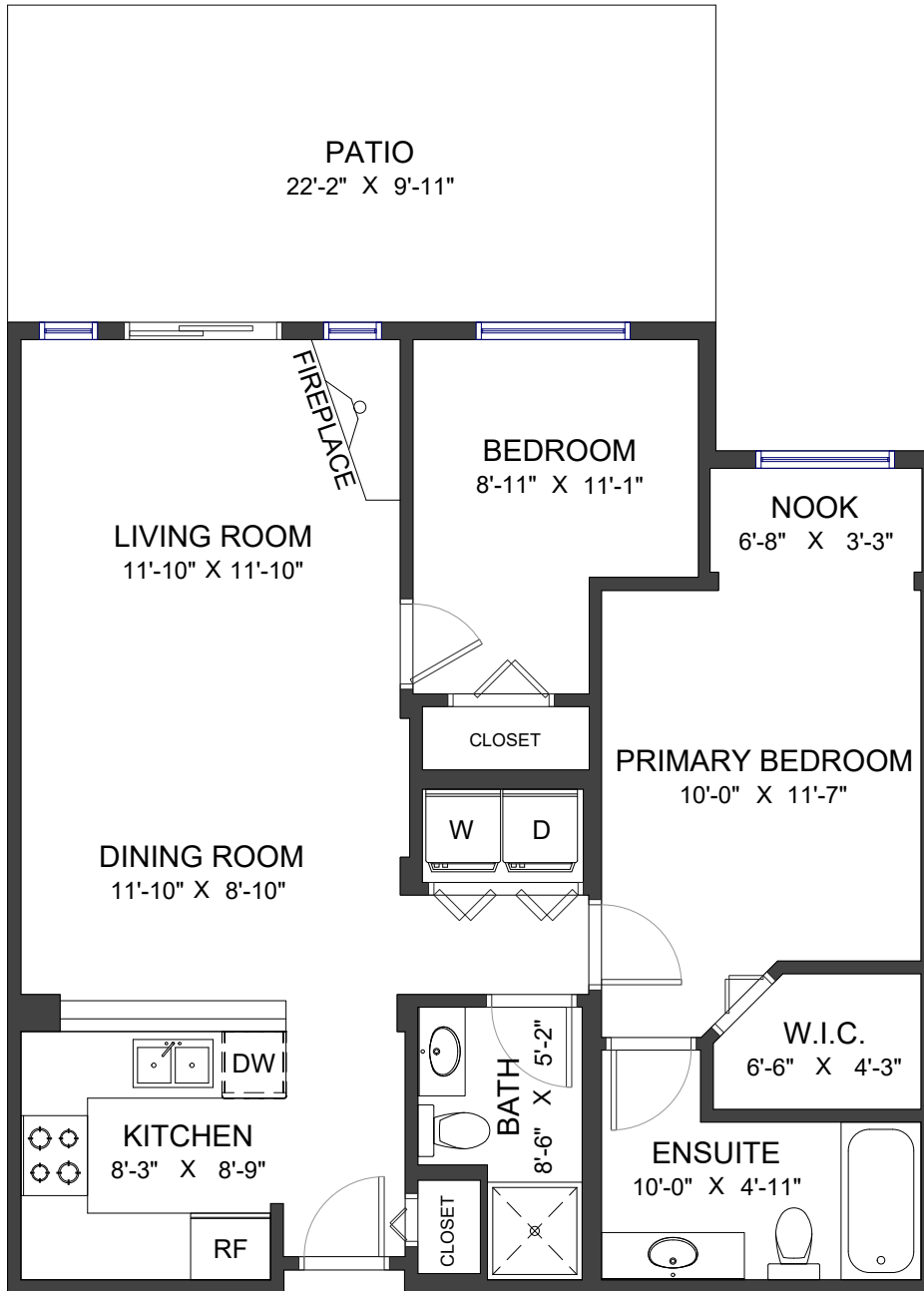




| | |
|----------------|--------|
| LIVING AREA | 849 SF |
| PATIO | 219 SF |
| CEILING HEIGHT | 8' |



Valid Until: April 3, 2025

All dimensions are approximate and not suitable for architectural/construction use. This is for marketing purposes only. The measurements are approximate within +/- 2%, E&O insured. Total square footage might be kept consistent with strata plan. It might include unfinished area.

